

TOR DEN Conventional Dental Phantom

Leeds Test Objects' TOR DEN conventional phantom is designed to be used to check the image quality performance of conventional dental x-ray systems. These tests should be carried out at acceptance to establish a baseline, and on a routine basis, keeping an on-going record of the test results, which will indicate any deterioration in performance.

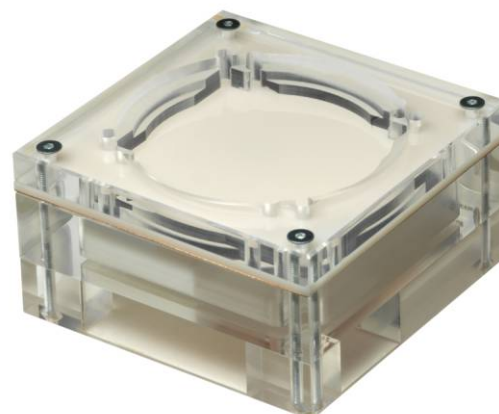
TOR DEN Conventional is used for units with conventional film-based image acquisition, and has been designed in accordance with the standard IEC 61223-3-4.

TOR DEN Conventional enables:

- Optical Density Constancy
- Radiation Field Alignment ~ for Panoramic and Cephalometric tests only

The phantom is supplied with a magnetic jig. For systems with no magnetic receptor, a suction jig is also available.

The TOR DEN phantoms are supplied in a tough case with a bespoke foam insert.





TOR DEN Conventional

Dental Phantom

Details

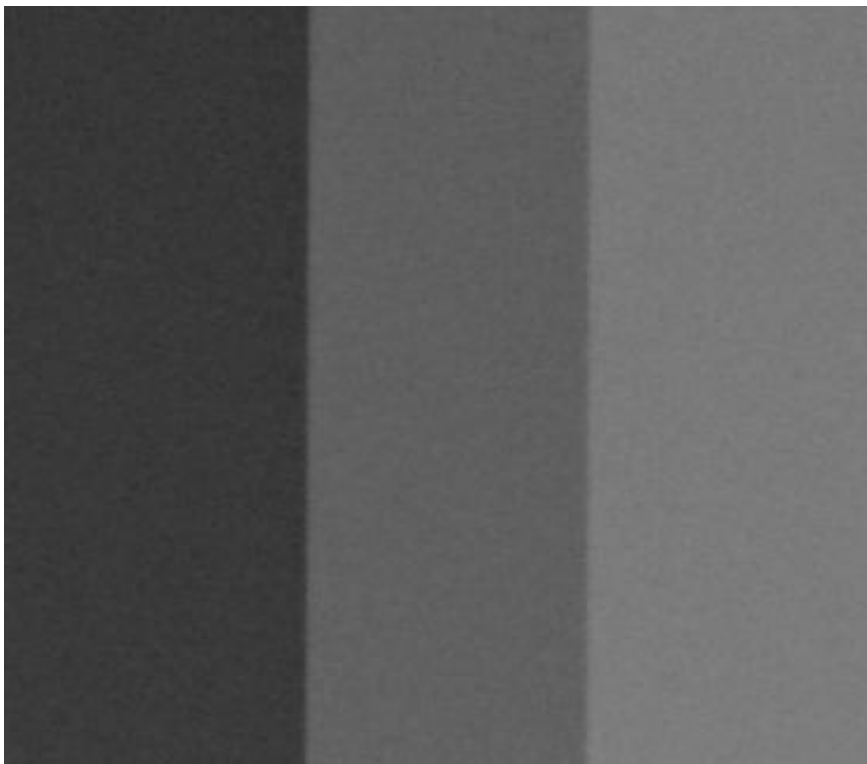


fig. 1 Radiograph of TOR DEN Conventional